

PHASE 3, LEVEL 3

What does this mean for me?

SMS Student Phase Change Presentation
3.8.2021



On **Monday, March 8**, we will begin a full-day schedule.

- You will attend class every Monday, Tuesday, Thursday, & Friday.
- There is NO change to Wednesdays. You will still complete the check-in and can meet with teachers if you need help.

You will be EITHER all day at school OR all day remote.
No student will have days split between the two.

CLASS BELL SCHEDULE AS OF MARCH 8, 2021

Period	Start Time	End Time	# minutes
1	8:05 am	8:50 am	45
2	8:55 am	9:40 am	45
3	9:45 am	10:30 am	45
4	10:35 am	11:20 am	45
Lunch/IE	11:25 am	12:20 pm	20 Lunch / 35 IE
5	12:25 pm	1:10 pm	45
6	1:15 pm	2:00 pm	45
7	2:05 pm	2:50 pm	45

On 3.8.2021 as you will report to your first period class,

You should have received:

- new printed schedule
- new classbell schedule
- face shield
(If you want to provide your own face shield, you can. It must cover your face from your forehead to chin.)



CLASSROOM

- Wear a mask at all times (one exception when eating).
- Maintain at least 6 feet apart.

If you are less than 6 feet from your classmate, your teacher will also require you to—

- Wear a face shield OR use a desk shield (*teacher choice*)



OR



CLASSROOM

- Any shared materials must be cleaned before someone else uses them.
- Clean your desk before you leave AND when you arrive. Use the sanitizing wipes provided at your workstation.
- Wipe your desk and the back of your chair. Do NOT wipe the desk shield.

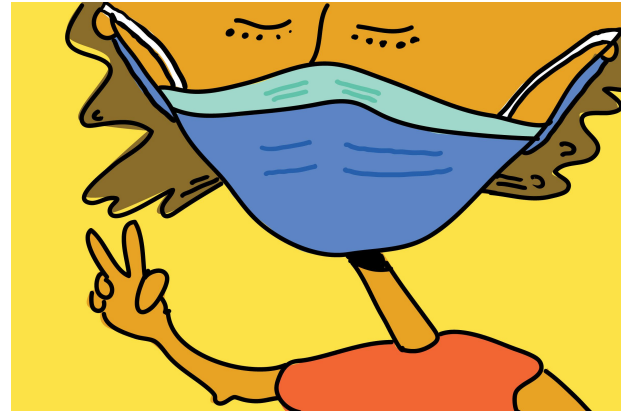


HALLWAYS (and other places outside the classroom)

- Wear mask + face shield OR double mask (you choose).



OR



- Maintain 6 feet apart.
- Move directly to your destination.
 - Do NOT gather together in the hallway.
 - We are NOT using lockers.

Remember that the stairs are ONE WAY. They go up (near rooms 104 and 204) OR down (near room 201 and 101).

LUNCH / IE

Grade	IE Time	Lunch	IE Time
6		11:25-11:45	11:45:12:20
7	11:25-11:45	11:45-12:05	12:05-12:20
8	11:25-12:00	12:00 - 12:20	

- At the end of 4th Period, go to your I/E class.
- Your class will have a specific time to leave for the cafeteria.
- Everyone (even if you brought your lunch) will walk to the cafeteria so that those wanting school lunch can pick it up and the room can be sanitized.
- If you brought your lunch to school, take it with you or put it in a book bag so it doesn't get sprayed!

EATING IN THE CLASSROOM

- You will have 15 minutes to eat breakfast or lunch.
(Breakfast must be eaten by 8:15)
- All students must face the same direction while eating.
- Student must remain seated in the room while people are eating.
- You must eat within your desk shield area.
- You can't talk with others while you or they are eating.
- You can't share food items or give any of your breakfast or lunch to someone else.
- Your teacher will direct you when and how to dispose of your meal trash.

ON THE BUS

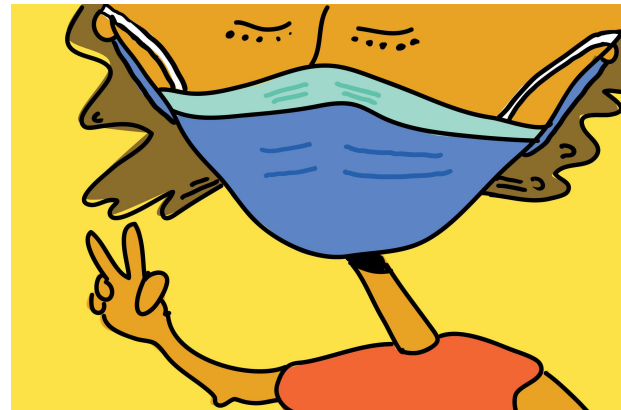
- Wear a mask at all times.
- Sit in your assigned seat.
- No eating.

If there are a lot of people on your bus, you may be assigned to sit with another person.

IF that person doesn't live with you, you must wear EITHER mask + face shield OR double mask.



OR



What does it mean to **Wear** a mask?

- The mask must cover your mouth AND your nose.
- The mask must be held snugly to your face.



Also remember to wash hands or use hand sanitizer regularly.

Shawsville Mustangs are

RESPECTFUL

RESPONSIBLE

PART OF A COMMUNITY